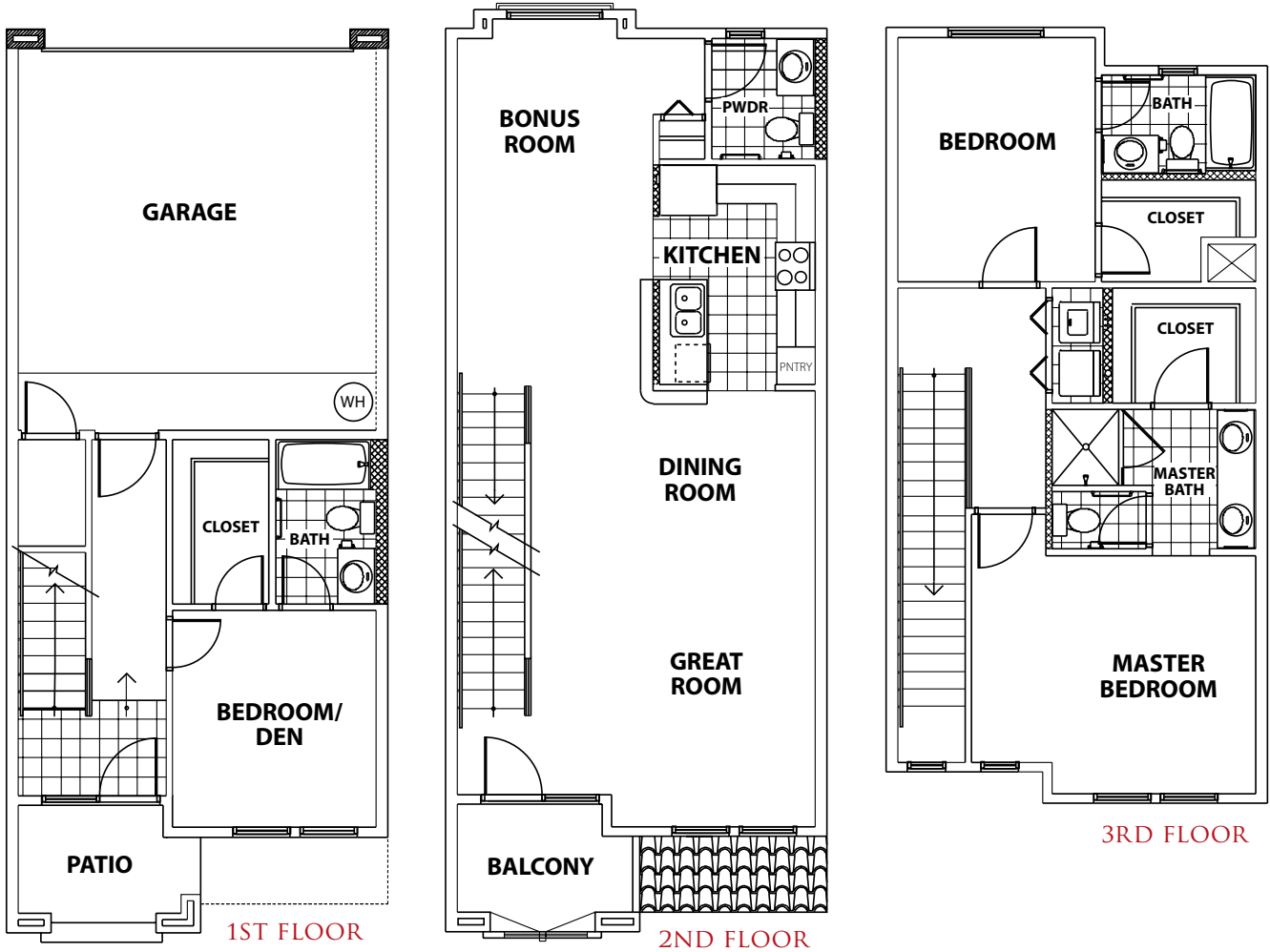


THE AZTEC

The largest of the four floor plans, the spacious three-story Aztec allows versatility in its rooms. Choose to make the entry level space either a den, guest suite or convenient home office. The one-of-a-kind bonus room allows for a space family room, media room or library.

FLOOR PLAN OVERVIEW

- » 2,037 sq. ft.
- » 3 Bedrooms
- » 3.5 Baths
- » Island Kitchen with Breakfast Bar
- » Convenient Laundry on Bedroom Level
- » 2 Car Garage



FLOOR PLAN PICTURES



GREAT ROOM



KITCHEN



BEDROOM



DINING ROOM