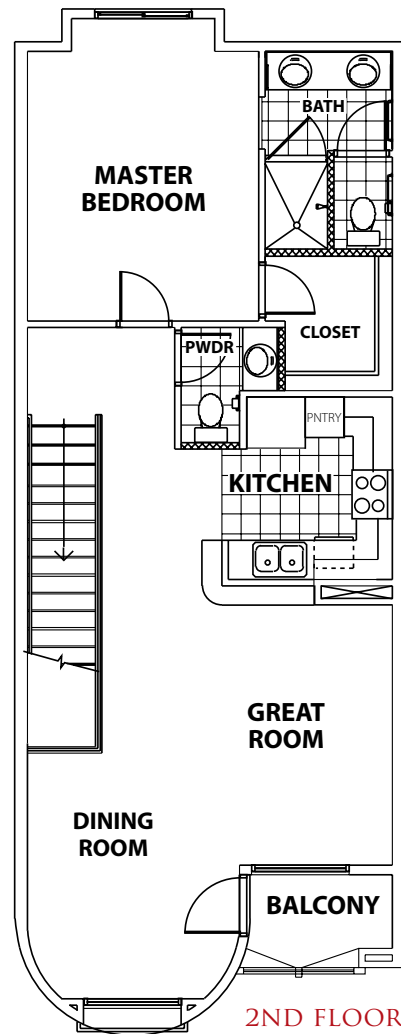
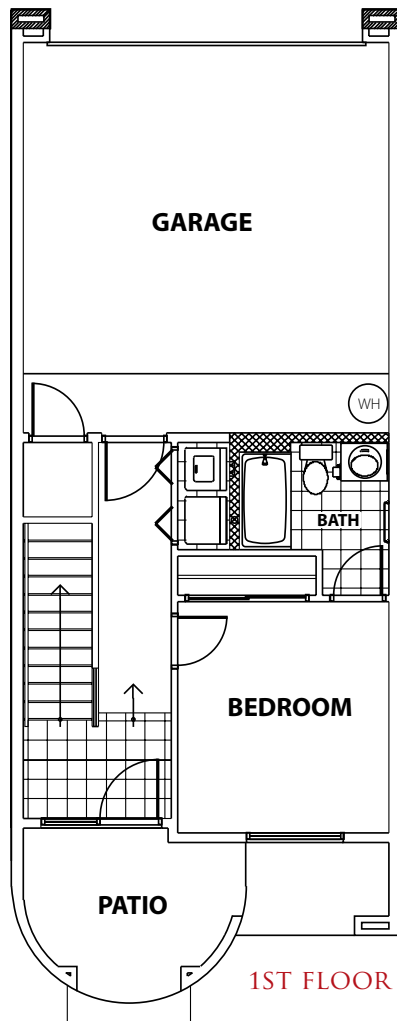


THE DURANGO

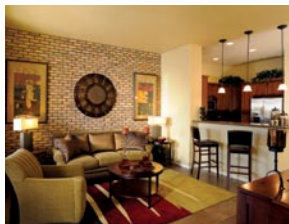
The Durango's quaint space allows for all of the luxury of urban living with its two-story design. Equipped with a private patio and balcony, the Durango townhome is deceptively spacious with attached bathrooms to both bedrooms, a roomy kitchen and a great room and dining area that overlooks Chandler's vibrant downtown.

FLOOR PLAN OVERVIEW

- » 1,367 sq. ft.
- » 2 complete Bedroom Suites
- » Upper Level Balcony
- » Lower Level Laundry
- » 2 Car Garage



FLOOR PLAN PICTURES



GREAT ROOM



KITCHEN



BEDROOM